



## WIG AND WARDROBE HOST – LEVEL 2

A position that facilitates the general up keep of wigs, props, shoes and costumes. Including but not limited to washing, setting, repairing and styling of costumes and wigs.

- *Team Members performing this role must have a basic knowledge of sewing and costume repairs and an interest in Hair/Wig styling.*

## V.I.P HOST – LEVEL 2

A position that facilitates Back of House guided tours, interacting with guests and loyalty members, offering a behind the scenes look at the operations of the Amusement Park. This position may also be required to assist in other areas of the park and within the department, depending on necessities for the parks operation.

- *Team Members performing this role must be able to learn a script, have a warm and welcoming nature and must present themselves with the upmost professionalism at all times.*

## AUDIO HOST – LEVEL 2

A position that operates the audio for shows and appearances, provides information to guests through the use of vocal projection and/or a microphone. This position participates in the setting up and pack down of audio systems and staging requirements, driving the buggy for certain performances and assisting with Backstage and BOH tasks and duties when required.

- *Team Members performing this role must have a current Provisional or Full Australian Driver's License.*
- *Team Members performing this role must also be signed off and trained in WHS Buggy Operations.*

## LUNABOB – CATEGORY A

A position that performs purely as a Suit Operator and Enclosed Costume Performer, operating inside a costume that requires larger than life movement and characterisation. This position may also be required to host if called upon.

- *Team Members performing this role must have dance ability and strong performance ability to perform inside a Character Costume.*
- *Height Requirements – 165-180cm*
- *Gender – NA*
- *Physicality – Small to Average Build – Physically Fit*
- *Age Range – 16+*



## LUNABELLE – CATEGORY A

A position that performs purely as a Suit Operator and Enclosed Costume Performer, operating inside a costume that requires larger than life movement and characterisation. This position may also be required to host if called upon.

- *Team Members performing this role must have dance ability and strong performance ability to perform inside a Character Costume.*
- *Height Requirements – 154-164cm*
- *Gender – NA*
- *Physicality – Small to Average Build – Physically Fit*
- *Age Range – 16+*

## FUN GUY – CATEGORY B

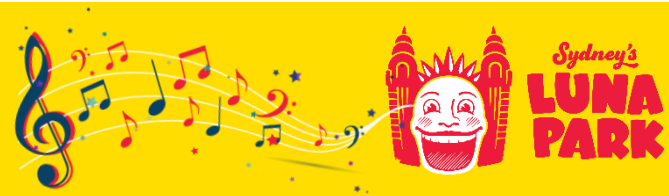
A position that performs as a host/chaperone for suit operators, engaging with guests and providing interaction and communication on behalf of their character counterpart. This position also performs as a Dancer in park.

- *Team Members performing this role must have technical dance training and the ability to interact with guests in a professional and engaging manner.*
- *Height Requirements – N/A*
- *Gender – Male*
- *Physicality – Average Build – Physically Fit*
- *Age Range – 16+*

## FUN GIRL – CATEGORY B

A position that performs as a host/chaperone for suit operators, engaging with guests and providing interaction and communication on behalf of their character counterpart. This position also performs as a Dancer in park.

- *Team Members performing this role must have technical dance training and the ability to interact with guests in a professional and engaging manner.*
- *Height Requirements – N/A*
- *Gender – Female*
- *Physicality – Average Build – Physically Fit*
- *Age Range – 16+*



## GROOVY GUY – CATEGORY B

A position that performs as a Suit Operator and Performer, operating inside a costume that requires larger than life movement and characterisation. This position also performs as a dancer in park who may also be required to host if called upon.

- *Team Members performing this role must have technical dance training and the ability to perform inside a Character Costume.*
- *Height Requirements – 165-180cm*
- *Gender – Male*
- *Physicality – Small to Average Build – Physically Fit*
- *Age Range – 16+*

## GROOVY GIRL – CATEGORY B

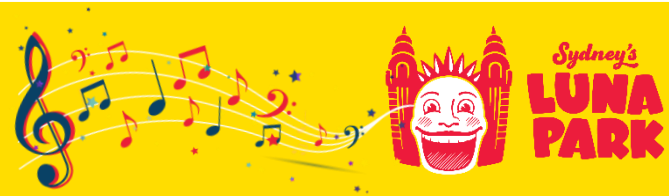
A position that performs as a Suit Operator and Performer, operating inside a costume that requires larger than life movement and characterisation. This position also performs as a dancer in park who may also be required to host if called upon.

- *Team Members performing this role must have technical dance training and the ability to perform inside a Character Costume.*
- *Height Requirements – 154-164cm*
- *Gender – Female*
- *Physicality – Small to Average Build – Physically Fit*
- *Age Range – 16+*

## FRECKLE – CATEGORY B

A position that performs as an Actor in park, portraying characters that are taught under specific training. This position may also be required to host/chaperone in the park.

- *Team Members performing this role must have a general knowledge of Acting and Dramatic training.*
- *Height Requirements – 154-164cm*
- *Gender – Female*
- *Physicality – Small build – Physically Fit*
- *Age Range – Ability to Play an age range of 16-20*



## SPECKLE – CATEGORY B

A position that performs as an Actor in park, portraying characters that are taught under specific training. This position also performs as a Dancer in park, as well as host/chaperone when required.

- *Team Members performing this role must have a general knowledge of Acting and Dramatic training. They must also have technical dance training.*
- *Height Requirements – 154-164cm*
- *Gender – Female*
- *Physicality – Small build – Physically Fit*
- *Age Range – Ability to Play an age range of 16-20*

## BLIP – CATEGORY B

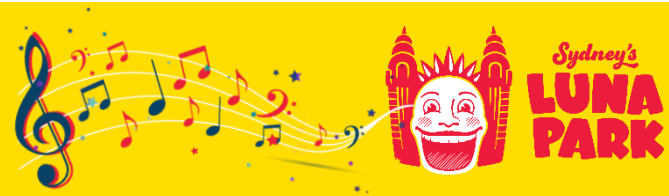
A position that performs as an Actor in park, portraying characters that are taught under specific training. This position may also be required to host/chaperone in the park.

- *Team Members performing this role must have a general knowledge of Acting and Dramatic training.*
- *Height Requirements – 175-186cm*
- *Gender – Male*
- *Physicality – Average build*
- *Age Range – Ability to Play an age range of 20-30*

## TWERP – CATEGORY B

A position that performs as an Actor in park, portraying characters that are taught under specific training. This position may also be required to host/chaperone in the park.

- *Team Members performing this role must have a general knowledge of Acting and Dramatic training.*
- *Height Requirements – 175-186cm*
- *Gender – Male*
- *Physicality – Average build*
- *Age Range – Ability to Play an age range of 20-30*



## PAVLOVA – CATEGORY B

A position that performs as an Actor in park, portraying characters that are taught under specific training. This position may also be required to host/chaperone in the park.

- *Team Members performing this role must have a general knowledge of Acting and Dramatic training.*
- *Height Requirements – 162-174cm*
- *Gender – Female*
- *Physicality – Average build*
- *Age Range – Ability to Play an age range of 20-30*

## MERINGUE – CATEGORY C

A position that performs as an Actor in park, portraying characters that are taught under specific training. This position is also required to be a trained vocalist/singer. They may also be required to host/chaperone in the park.

- *Team Members performing this role must have a general knowledge of Acting and Dramatic training. They must also be a trained vocalist.*
- *Height Requirements – 162-174cm*
- *Gender – Female*
- *Physicality – Average build – Physically Fit*
- *Age Range – Ability to Play an age range of 20-30*

## LOOP – CATEGORY B

A position that performs as an Actor in park, portraying characters that are taught under specific training. This position also performs as a Dancer in park, as well as host/chaperone when required.

- *Team Members performing this role must have a general knowledge of Acting and Dramatic training.*
- *Height Requirements – 167-180cm*
- *Gender – Male*
- *Physicality – Small to Average build – Physically Fit*
- *Age Range – Ability to Play an age range of 18-21*



## ZAG – CATEGORY B

A position that performs as an Actor in park, portraying characters that are taught under specific training. This position also performs as a Dancer in park, as well as host/chaperone when required.

- *Team Members performing this role must have a general knowledge of Acting and Dramatic training. They must also have technical dance training.*
- *Height Requirements – 167-180cm*
- *Gender – Male*
- *Physicality – Small to Average build – Physically Fit*
- *Age Range – Ability to Play an age range of 18-21*

## RED COAT RINGMASTER – GROUND – CATEGORY C

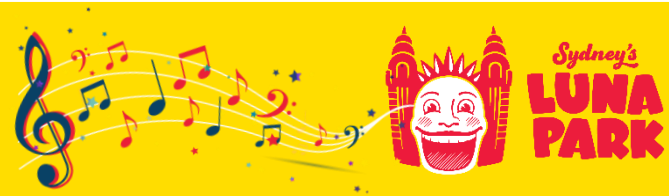
A position that performs as an Actor in park, portraying characters that are taught under specific training. This position is also required to be a trained vocalist/singer. They may also be required to host/chaperone in the park.

- *Team Members performing this role must have a general knowledge of Acting and Dramatic training. They must also be a trained vocalist.*
- *Height Requirements – NA*
- *Gender – Male*
- *Physicality – Average build – Physically Fit*
- *Age Range – Ability to Play an age range of 20-30*

## OOH LA LA LADY – GROUND – CATEGORY B

A position that performs as an Actor in park, portraying characters that are taught under specific training. This position may also be required to host/chaperone in the park.

- *Team Members performing this role must have a general knowledge of Acting and Dramatic training.*
- *Height Requirements – NA*
- *Gender – Female*
- *Physicality – Small build*



## RED COAT RINGMASTER – STILT – CATEGORY C

A position that performs on Stilts as an Actor in park, portraying characters that are taught under specific training.

- *Team Members performing this role must have a general knowledge of Acting and Dramatic training.*
  - *Team Members performing this role must be trained to perform on Stilts*
  - *Height Requirements – NA*
  - *Gender – Male*
  - *Physicality – Average build*
  - *Age Range – 18+*
- \*This position is an additional skill that requires an internal audition*

## OOH LA LA LADY – STILT – CATEGORY C

A position that performs as an Actor in park, portraying characters that are taught under specific training. This position may also be required to host/chaperone in the park.

- *Team Members performing this role must have a general knowledge of Acting and Dramatic training.*
- *Team Members performing this role must be trained to perform on Stilts*
- *Height Requirements – NA*
- *Gender – Female*
- *Physicality – Small build*
- *Age Range – Ability to Play an age range of 18-30*
- *\*This position is an additional skill that requires an internal audition*

## TIP TOP TAPPER – CATEGORY C

A position that requires the performer to be technically trained in Tap Dancing. This position may also be required to host/chaperone in the park.

- *Team Members performing this role must have technical training in Tap Dancing.*
  - *Height Requirements – NA*
  - *Gender – NA*
  - *Physicality – Physically Fit*
  - *Age Range – 16+*
- \*This position is an additional skill that requires an internal audition*



## TEAM LEADER – CATEGORY D

A position that leads the team during a rostered shift while the park is in operation. Responsible for maintaining safe work practice, professional performance standards and support for team members during their shift. This position is required to be observant, attentive and able to fill in for a variety of roles to ensure the smooth running and operation of the department.

- For further information – See the ‘Showtime Team Leader Description’  
S:\Operations\Operations Only\Amusement Park\Showtime\Procedures

## HIGHER DUTIES – CATEGORY D

A position that feeds from within the team to step up into leading when required during a rostered shift while the park is in operation. Responsible for maintaining safe work practice, professional performance standards and support for team members during their shift. This position is required to be observant, attentive and able to fill in for a variety of roles to ensure the smooth running and operation of the department.

## REHEARSAL CAPTAIN – CATEGORY C

A position that leads a rehearsal of team members, teaching material that has been taught and/or given to them to teach. This position is responsible for replicating material in a consistent and safe manner to ensure the professional performance quality in all shows and appearances.

